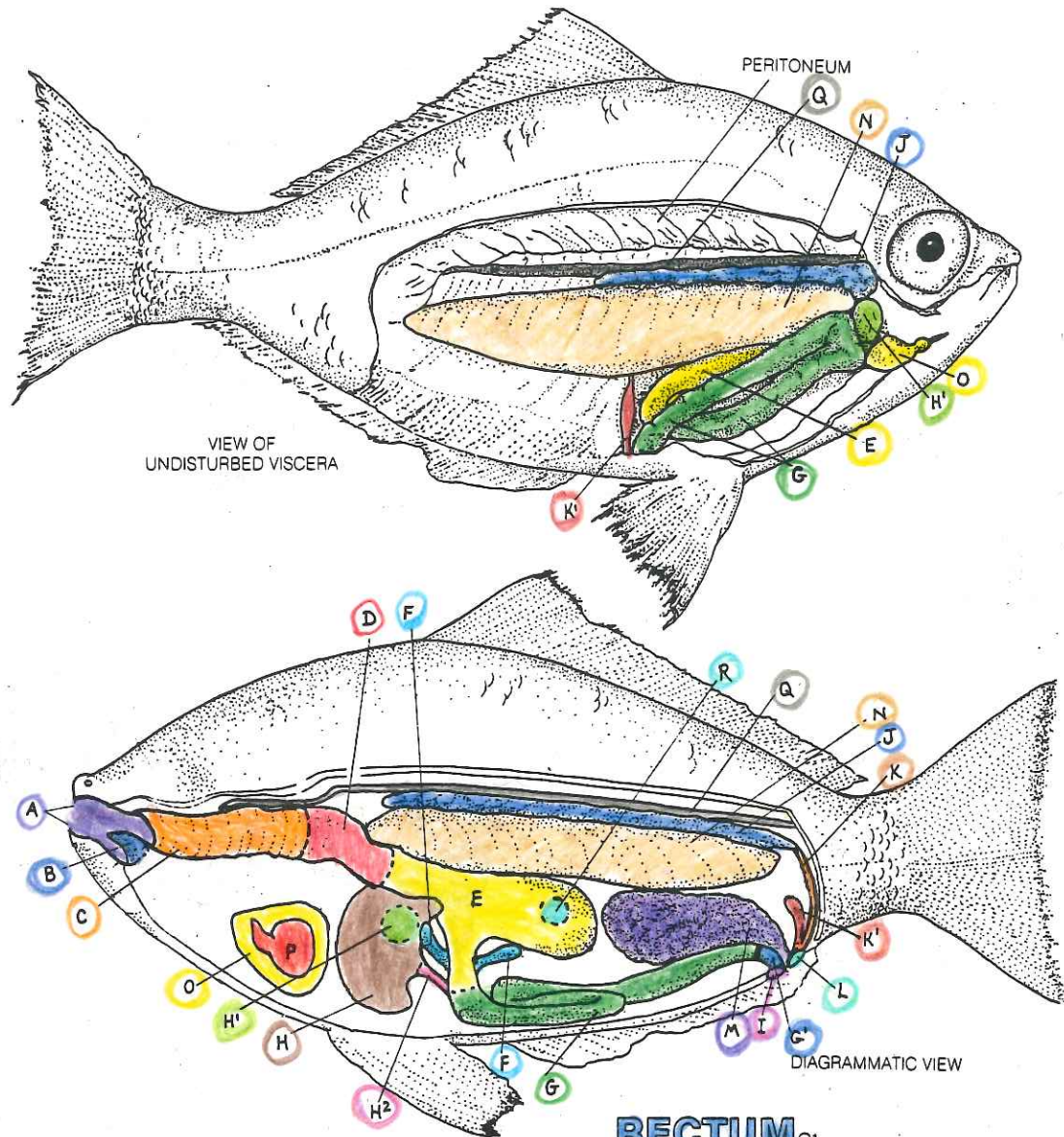


BONY FISH: II INTERNAL STRUCTURE.



DIGESTIVE TRACT*

- ORAL CAVITY_A
- TONGUE_B
- PHARYNX_C
- ESOPHAGUS_D
- STOMACH_E
- PYLORIC CECUM_F
- INTESTINE_G
- LIVER_H
- GALL BLADDER_{H¹}
- BILE DUCT_{H²}

RECTUM_{G¹}

ANUS_I

EXCRETORY SYSTEM*

- KIDNEY_J
- URINARY DUCT_K
- BLADDER_{K¹}
- UROGENITAL SINUS_L
- GONAD_M
- SWIM BLADDER_N
- PERICARDIAL CAVITY_O
- HEART_P
- DORSAL AORTA_Q
- SPLEEN_R

FROG: VII

DIGESTIVE SYSTEM.

BUCCAL CAVITY*

TONGUE_A

MAXILLARY

TEETH_B

VOMERINE

TEETH_{B'}

INTERNAL

NOSTRIL_C

AUDITORY

ORIFICE_D

PHARYNX_E

GLOTTIS_F

ESOPHAGUS_G

STOMACH_H

SMALL INTESTINE_I

LARGE INTESTINE_J

CLOACA_K

LIVER.

GALL BLADDER_M

HEPATIC DUCT_N

CYSTIC DUCT_O

COMMON BILE DUCT_P

PANCREAS_Q

PANCREATIC DUCT_{Q'}

SPLEEN_R

