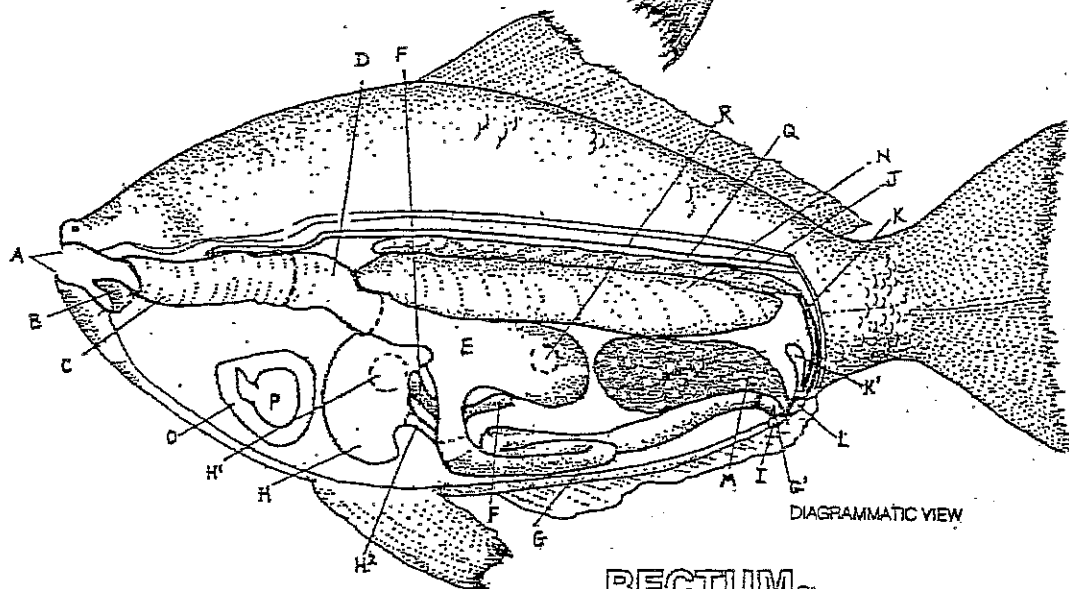
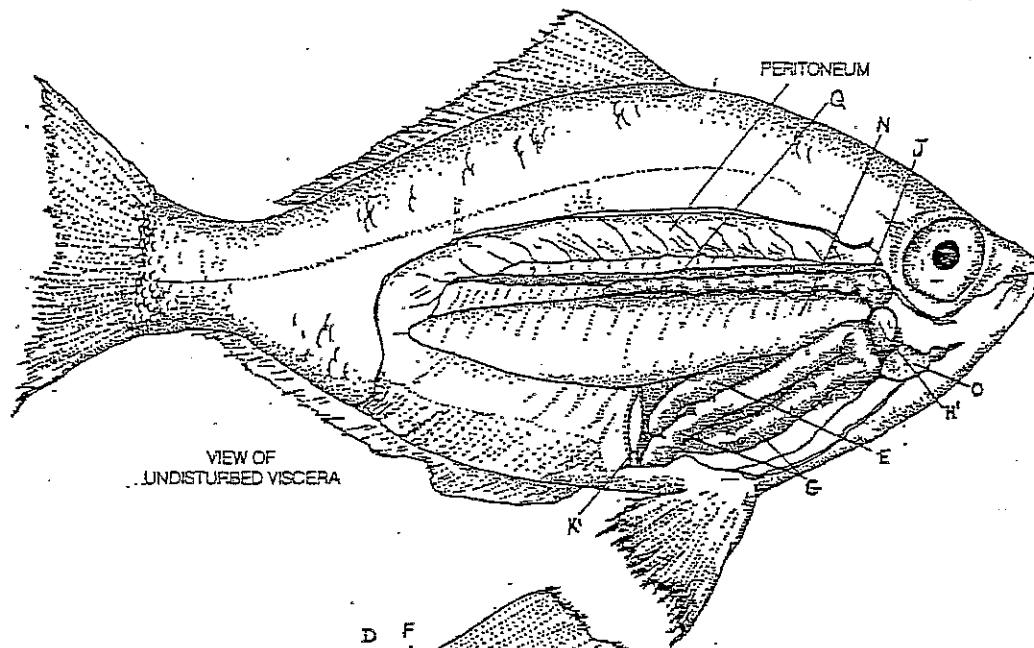


BONY FISH: II INTERNAL STRUCTURE



DIGESTIVE TRACT

ORAL CAVITY_A
 TONGUE_B
 PHARYNX_C
 ESOPHAGUS_D
 STOMACH_E
 PYLORIC CECUM_F
 INTESTINE_G
 LIVER_H
 GALL BLADDER_{H'}
 BILE DUCT_{H''}

RECTUM_I
 ANUS_J

EXCRETORY SYSTEM

KIDNEY_K
 URINARY DUCT_L
 BLADDER_M
 UROGENITAL SINUS_N
 GONAD_O
 SWIM BLADDER_P
 PERICARDIAL CAVITY_Q
 HEART_R
 DORSAL AORTA_S
 SPLEEN_T

FROG: VII

DIGESTIVE SYSTEM

TONGUE_A
MAXILLARY
TEETH_B
VOMERINE
TEETH_C
INTERNAL
NOSTRIL_D
AUDITORY
ORIFICE_E
PHARYNX_F
GLOTTIS_F
ESOPHAGUS_G
STOMACH_H
SMALL INTESTINE
LARGE INTESTINE
CLOACA_K
LIVER_L
GALL BLADDER_M
HEPATIC DUCT
CYSTIC DUCT
COMMON BILE DUCT
PANCREAS
PANCREATIC DUCT
SPLEEN

