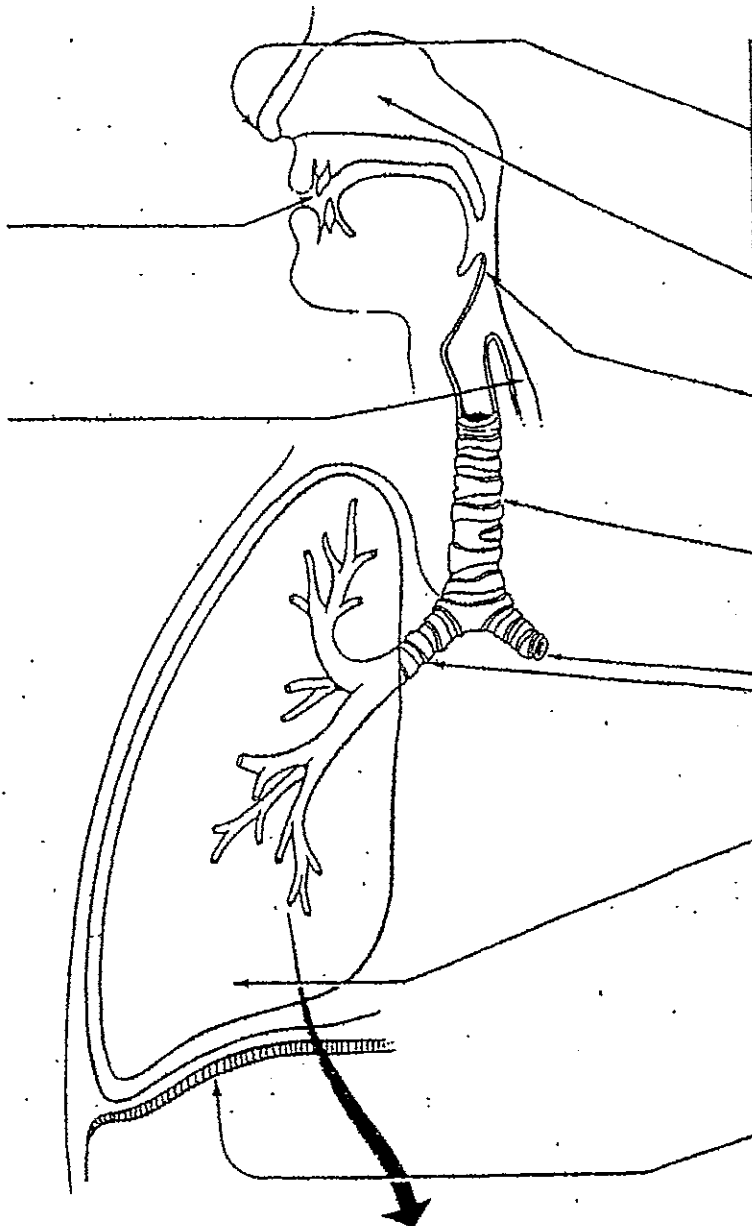


Name _____ Date _____ Class _____

HUMAN RESPIRATORY SYSTEM



Respiratory system parts and functions	
_____	<ul style="list-style-type: none"> • air enters • hairs block or trap dust and unwanted objects
_____	<ul style="list-style-type: none"> • warms air and adds moisture as it enters
_____	<ul style="list-style-type: none"> • flap that closes over trachea during swallowing • keeps food and liquid out of lungs
_____	<ul style="list-style-type: none"> • tube that carries air from nasal chamber to bronchi
_____	<ul style="list-style-type: none"> • short tube that carries air from trachea to right and left lungs
_____	<ul style="list-style-type: none"> • main organ of respiratory system • tiny air sacs and blood capillaries where oxygen moves into blood and carbon dioxide moves out
_____	<ul style="list-style-type: none"> • muscle at bottom of chest cavity • moves up when relaxed and helps with breathing out • moves down when contracted and helps with breathing in
_____	<ul style="list-style-type: none"> • blood vessel that surrounds alveoli • site of gas exchange between blood and air
_____	<ul style="list-style-type: none"> • air sacs • site of gas exchange between blood and air

enlarged view of alveoli

X 2000

