

\_\_\_\_\_ 1. A change in the environment that causes a response by an organism is a

- a. gene
- b. phase
- c. stimulus
- d. nucleus

\_\_\_\_\_ 2. The energy-releasing process that does not require oxygen is called

- a. photosynthesis.
- b. respiration.
- c. fertilization.
- d. fermentation

\_\_\_\_\_ 3. What are the products of photosynthesis?

- a. carbon dioxide and water
- b. oxygen and carbon dioxide
- c. carbon dioxide and glucose
- d. oxygen and glucose

\_\_\_\_\_ 4. What happens during respiration?

- a. Oxygen is released into the air.
- b. Glucose is broken down, releasing energy.
- c. Carbohydrates are released into the bloodstream.
- d. Water and carbon dioxide are converted into energy.

\_\_\_\_\_ 5. A cell's nucleus divides to form two identical nuclei during the stage of the cell cycle known as

- a. mitosis
- b. photosynthesis
- c. diffusion
- d. osmosis

\_\_\_\_\_ 6. Which organelle is the control center of a cell?

- a. mitochondrion
- b. ribosome
- c. nucleus
- d. chloroplast

\_\_\_\_\_ 7. The proteins are made by the

- a. mitochondria
- b. ribosome
- c. lysosome
- d. Golgi body

---

Name and describe a type of Asexual Reproduction. Give an example.  
(Know 2 or 3 for test - pg. 18 in notebook)

Type: \_\_\_\_\_

Description:

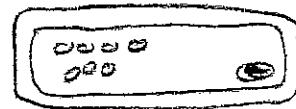
\_\_\_\_\_  
\_\_\_\_\_

Organism that uses it: \_\_\_\_\_

---

Label the following cell parts and identify diagrams below as a plant cell or an animal cell.

cell wall  
cell membrane  
cytoplasm  
nucleus  
chloroplasts



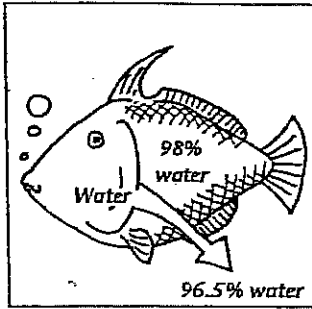
\_\_\_\_\_

How do you know? \_\_\_\_\_

---

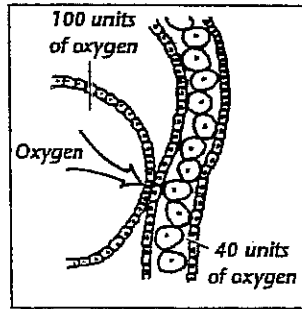
## Cell Transport - (pages 9-12 in notebook)

Fill in the blank to identify the process illustrated in each of the following figures.



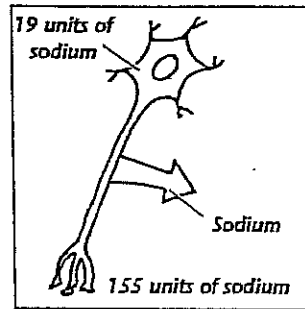
Water moves out of the cells of a saltwater fish and into the ocean.

1. \_\_\_\_\_



Oxygen moves from the lungs into the bloodstream.

2. \_\_\_\_\_



Sodium is pumped out of a nerve cell.

3. \_\_\_\_\_

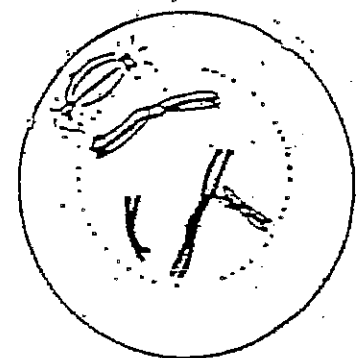
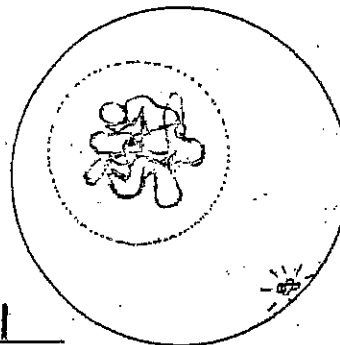
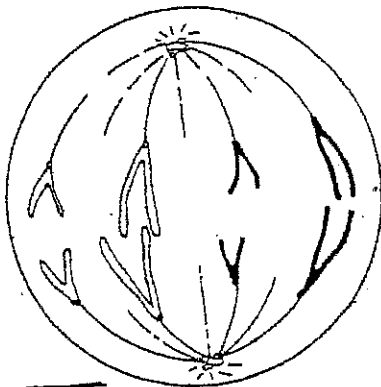
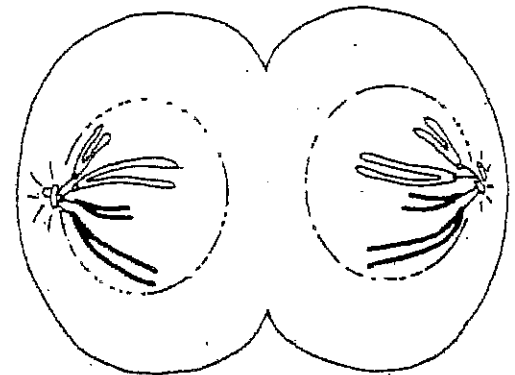
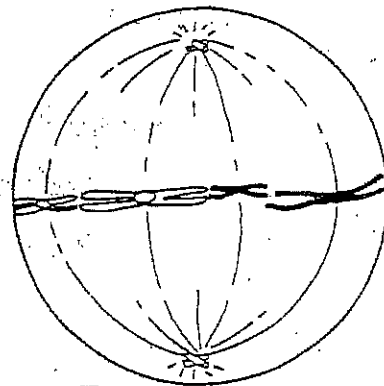
## Mitosis - (pages 19-20 in notebook)

Put the following steps of mitosis in the correct order by putting the number in the small blanks. Use numbers 2-5.

Identify which phase of mitosis is shown in each diagram by writing it on the large blanks.

### WORD BANK

metaphase  
prophase  
telophase  
interphase  
anaphase



Contrast the features of a Stereomicroscope to those of a Compound Microscope. (Describe differences - from experience in lab)

Stereomicroscope

•

•

•

Compound Microscope

•

•

•

(Hint: contrast the number of eyepieces and focus knobs, magnification, lighting, kind of sample viewed, and base vs. stage)

---

Write bullet notes for each of the following:

1. At least 3 Features of Living Organisms (pg. 2 in notebook)

2. The 5 Levels of Organization of Life (pgs. 4 and 5 in notebook)

3. Cell parts and functions: nucleus, cell membrane, cell wall, chloroplast, mitochondria, cytoplasm, vacuole, ribosomes, centrioles, and chromosomes (pages 6 and 7 in notebook)

